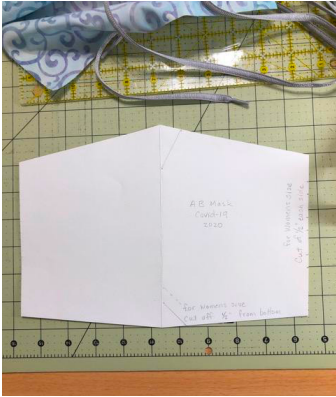
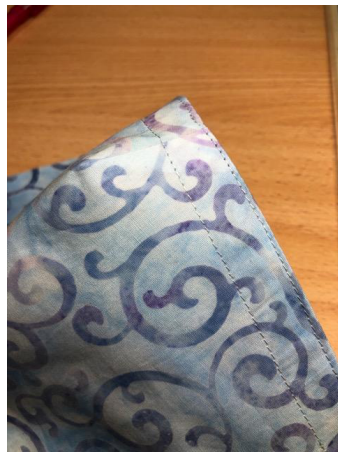
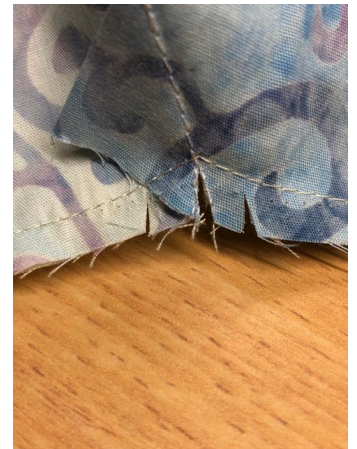


Patrice's Shoelace Face Mask Pattern



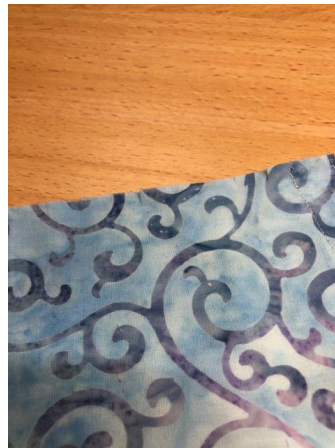
I use the AB facemask that the Ventura County Medical Center requested (<https://www.instructables.com/id/AB-Mask-for-a-Nurse-by-a-Nurse/>), but I cut $\frac{1}{2}$ " off the sides and bottom to make it fit more snugly for a woman's face. I use batik fabric for the outside and the lining and $\frac{1}{4}$ " seams throughout.

Sew the nose and chin darts on each piece separately. Iron. With right sides together, "nest" the darts and sew across the top and bottom, pivoting at the center, especially at the chin. Clip the seams at the dart; I make three clips.



Turn right side out. Iron top and bottom seams. Top stitch $\frac{1}{16}$ " across the top and bottom seams to keep mask flat when washing, again pivoting at the center.

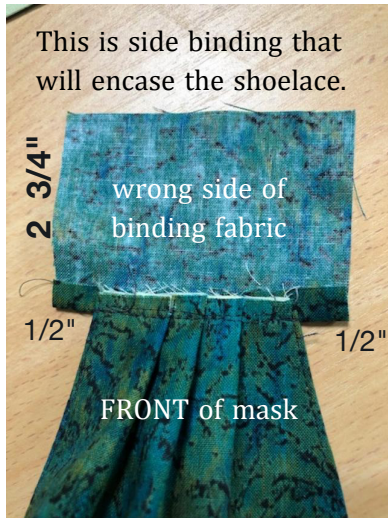
Measure down $\frac{1}{2}$ " from the top stitching on the top of the mask only. Stitch along this line, which forms a casing for the nose clip.



Mark the pleats as usual, which should make the sides between 2" and 2 $\frac{1}{2}$ " wide.

Patrice's Shoelace Face Mask Pattern

page 2



For the side binding that will hold the shoelace, cut two pieces that are 2 3/4" by 1" wider than your mask side (ie. 3" if the side measures 2", or 3 1/2" if the side measures 2 1/2")

Pin the right side of binding fabric to the right side of the back of the mask. Stitch 1/4".

Fold binding away from the mask and iron. Fold the two side edges of the binding toward the center.

Iron and stay stitch 1/4" from folded edge from the top raw edge down through the seam.

Use a 45" or a 54" shoelace.

Place the shoelace across the binding about 3/4" from the top raw edge, with the end of the lace pointing to the top of the mask.



Fold the fabric over the lace so that the lace is at the top of the fold. Fold again so that the lace is at the bottom of the fold. Fold over a third time and the lace will be away from the mask and the folded edge will now cover the seam allowance. This reinforces the fabric where it will be stressed when pulled on and off many times.

Top stitch along the edge, keeping the lace free. I reinforce the top and bottom by adding a triangle at each end, because this is where the lace will be pulling.

Carefully snip a tiny opening in the lining fabric to insert a wire or twist tie to make the mask lie flat under the eyes, which prevents glasses from getting fogged up and provides greater protection.

Make sure that the shoelace loops around the back of the neck and UP through the side binding to tie at the back of the head.